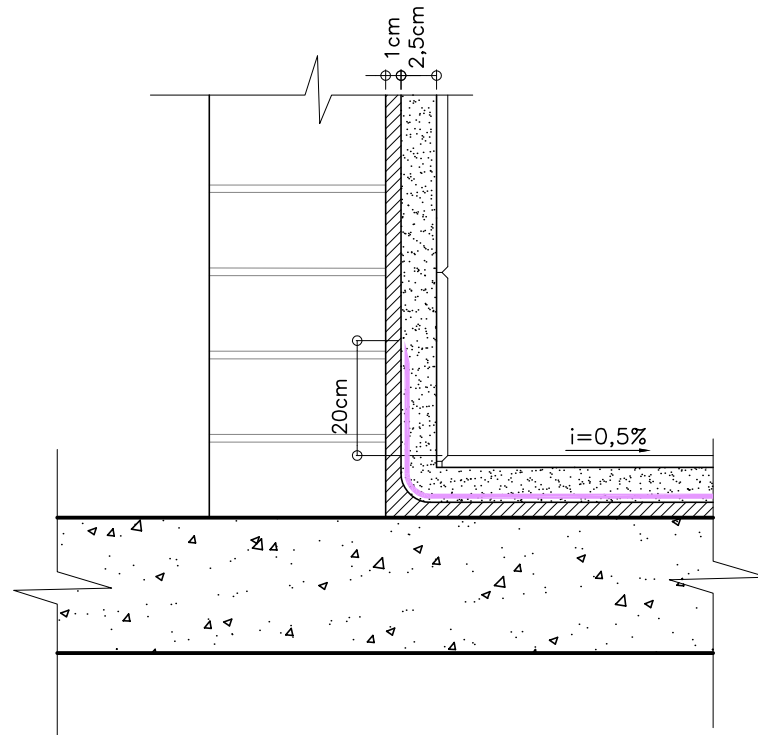
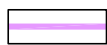
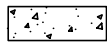


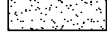
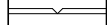


## RODAPÉ



### LEGENDA

-  DENVERTEC ELASTIC FIBRAS (3,50 kg/m<sup>2</sup>)  
Estruturado com tela industrial de poliéster resinada
-  Concreto armado
-  Alvenaria
-  Regularização de superfície
-  Proteção mecânica
-  Acabamento

**DENVER**  
**IMPERMEABILIZANTES**

Denver Impermeabilizantes, Indústria e Comércio Ltda  
Rua Ver. João Batista Fitipaldi, 500 - Cep.: 08665-000  
Suzano - SP

## DETALHE GENÉRICO DE IMPERMEABILIZAÇÃO

DETALHE:

ÁREAS FRIAS 8 - RODAPÉ (ALVENARIA)

PRODUTO:

MEMBRANAS MOLDADAS IN LOCO

DATA:

FEV/2020

ESCALA:

S/ Escala